

# Draft Climate Action Plan for Transportation Infrastructure (CAPTI)

Stakeholder Conversations | February 2021



# Why CAPTI?

---



# Governor's Executive Order N-19-19

Leverage state transportation spending to help meet state climate goals

- Align planning and programming with objectives of California Climate Change Scoping Plan
- Reduce VMT by directing investments in a way that support infill development, especially housing near jobs
- Reduce congestion through innovative strategies that encourage people to shift from cars to other modes of travel
- Fund infrastructure that encourages transit use, walking, and biking
- Mitigate for any increases in transportation costs incurred on lower income Californians

**California State Agencies play a role in either scoping, recommending, or selecting projects in over \$5 Billion of transportation infrastructure funding annually:**

- Active Transportation Program (ATP)
- Interregional Transportation Improvement Program (ITIP)
- Local Partnerships Program (LPP)
- Solutions for Congested Corridors (SCCP)
- State Highway Operations & Protection Program (SHOPP)
- Trade Corridor Enhancement Program (TCEP)
- Transit & Intercity Rail Capital Program (TIRCP)



# Governor's Executive Order N-79-20

- EO focused on meeting our ZEV goals
- Highlights the need for expanding clean transportation options, as outlined in EO N-19-19 work.

# Process

## SPRING - SUMMER 2020

- Stakeholder briefings/meetings (April-July) – over 200 stakeholder groups engaged
- Stakeholder Survey – 79 respondents
- Received 14 formal comment letters
- Over 200 action item ideas submitted for interagency working group consideration

## Spring 2021

Final CAPTI Plan Released

## Winter 2021

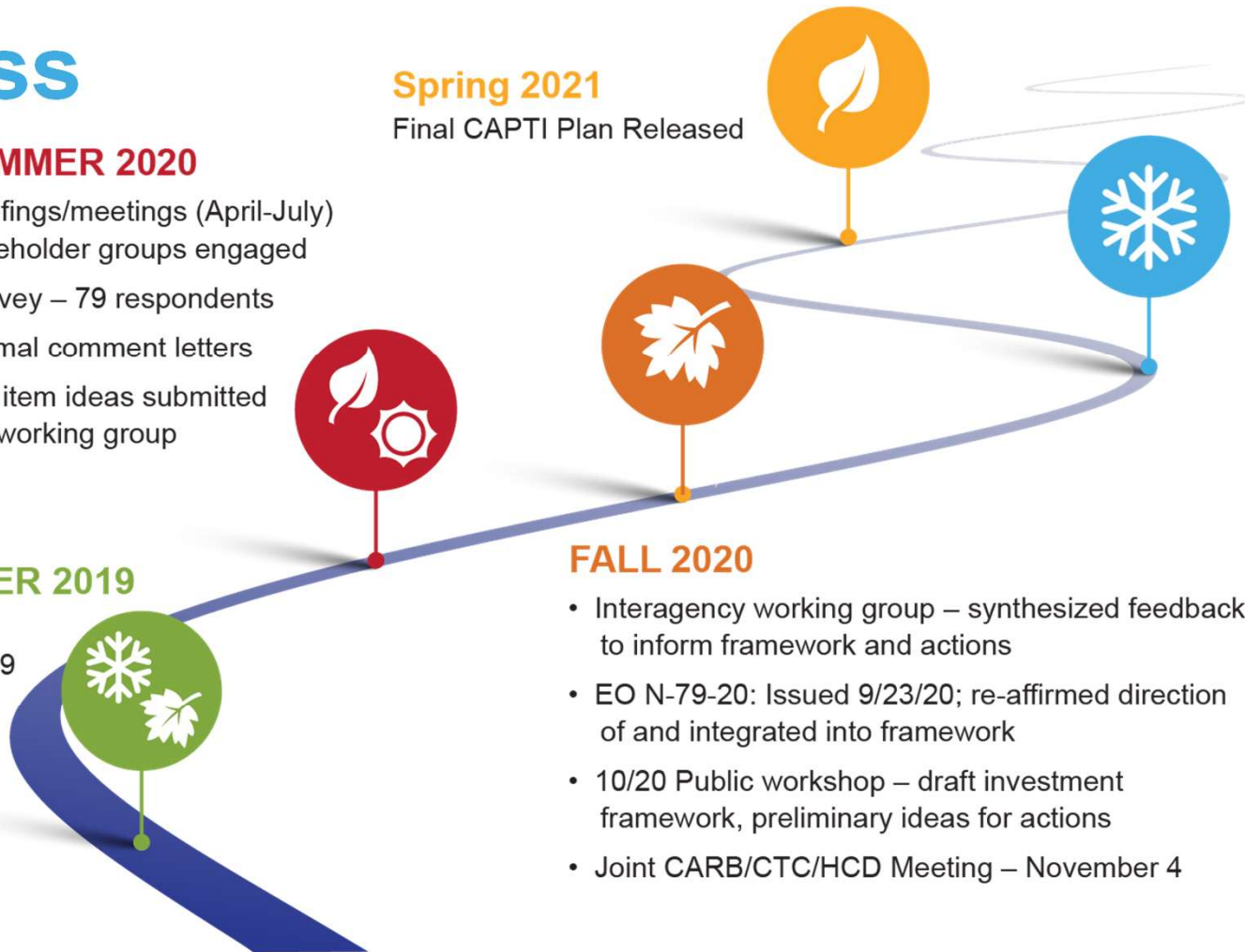
- Release Draft CAPTI Plan
- Public comment period
- Public workshop on final draft plan

## FALL - WINTER 2019

- EO N-19-19: Issued 9/20/2019

## FALL 2020

- Interagency working group – synthesized feedback to inform framework and actions
- EO N-79-20: Issued 9/23/20; re-affirmed direction of and integrated into framework
- 10/20 Public workshop – draft investment framework, preliminary ideas for actions
- Joint CARB/CTC/HCD Meeting – November 4



# CAPTI Draft Plan

---





# CAPTI is...

- A **holistic framework and statement of intent** for aligning State infrastructure investments with State climate, health, and social equity goals **built on the foundation of the “fix-it first” approach** established in SB 1
- A **suite of proposed changes** to State transportation planning, project scoping and programming, and mitigation activities **to align with the CAPTI framework**
- A **living document** that enables the CAPTI to adapt, pivot and modify approaches as needed
- A structure to **monitor and evaluate progress** of transportation infrastructure implementation to align with State climate, health and equity goals



# CAPTI Approach

- Maintain and build upon existing **“Fix-It-First”** approach
- **Ensure all areas of the state can benefit** from any changes to alignment of funds
- Set a framework that can **balance local contexts and needs** with standardized approaches



# CAPTI Investment Framework



**Building towards an integrated, statewide rail and transit network**



**Investing in networks of safe and accessible bicycle and pedestrian infrastructure**



**Including investments in light, medium, and heavy-duty zero-emission-vehicle (ZEV) infrastructure**

# CAPTI Investment Framework



**Reducing public health harms and maximize benefits to disproportionately impacted disadvantaged communities**



**Making safety improvements to reduce fatalities and severe injuries**



**Assessing physical climate risk**



**Promoting projects that do not increase passenger vehicle travel**



**Promoting compact infill development**



**Developing a zero-emission freight transportation system**



**Protecting natural and working lands**

# Seven CAPTI Strategy Areas

1. Cultivate and Accelerate Sustainable Transportation Innovation by Leading with State Investments
2. Support a Robust Economic Recovery by Revitalizing Transit, Supporting ZEV Deployment, and Expanding Active Transportation Investments
3. Elevate Community Voices in How We Plan and Fund Transportation Projects
4. Advance State Transportation Leadership on Climate and Equity through Improved Planning & Project Partnerships
5. Support Climate Resilience through Transportation System Improvements and Protections for Natural and Working Lands
6. Support Local and Regional Innovation to Advance Sustainable Mobility
7. Strengthen Transportation-Land Use Connections

## **S1. Cultivate and Accelerate Sustainable Transportation Innovation by Leading with State Investments**

	<b>Action</b>
<b>S1.1</b>	<b>Prioritize SCCP Projects to Enable Travelers to Opt Out of Congestion</b>
<b>S1.2</b>	<b>Promote Innovative Sustainable Transportation Solutions in SCCP by Requiring Multimodal Corridor Plans</b>
<b>S1.3</b>	<b>Fast Track New CAPTI-Aligned Projects in Early Planning Phases by Adding Them to the ITIP</b>
<b>S1.4</b>	<b>Mainstream Zero-Emission Vehicle Infrastructure Investments within TCEP</b>

## **S2. Support a Robust Economic Recovery by Revitalizing Transit, Supporting ZEV Deployment, and Expanding Active Transportation Investments**

	<b>Action</b>
<b>S2.1</b>	<b>Implement the California Integrated Travel Program (Cal-ITP)</b>
<b>S2.2</b>	<b>Identify A Long-Term Strategic Funding Pathway Across All Funding Opportunities to Realize the State Rail Plan</b>
<b>S2.3</b>	<b>Accelerate TIRCP Cycles to Support Transit Recovery with deployment of ZEV Transit/Rail Fleets and Transit/Rail Network Improvements</b>
<b>S2.4</b>	<b>Increase Funding to Active Transportation Program (ATP)</b>

## S3. Elevate Community Voices in How We Plan and Fund Transportation Projects

	Action
S3.1	Establish Transportation Equity and Environmental Justice Advisory Committee(s)
S3.2	Strengthen and Expand Coordinated, Targeted Technical Assistance on State Transportation Funding Programs
S3.3	Lift Up and Mainstream Community Engagement Best Practices
S3.4	Develop and Utilize Equity Index to Assist in Evaluation or Prioritization of Caltrans Projects



## **S4. Advance State Transportation Leadership on Climate and Equity through Improved Planning & Project Partnerships**

	<b>Action</b>
<b>S4.1</b>	<b>Develop and Implement the California Strategic Investment Strategy (CSIS) to Align Caltrans Project Nominations in with the CAPTI Investment Framework</b>
<b>S4.2</b>	<b>Align Interregional Transportation Strategic Plan 2021 (ITSP) with CAPTI Investment Framework</b>
<b>S4.3</b>	<b>Update the 2023 State Highway System Management Plan (SHSMP) and Asset Management Targets to Meaningfully Advance CAPTI Investment Framework</b>
<b>S4.4</b>	<b>Re-focus Caltrans Corridor Planning Efforts to Prioritize Sustainable Multimodal Investments in Key Corridors of Statewide and Regional Significance</b>
<b>S4.5</b>	<b>Develop and Implement Caltrans Climate Action Plan (CCAP)</b>
<b>S4.6</b>	<b>Incorporate Zero-Emission Freight Infrastructure Needs in California Freight Mobility Plan (CFMP)</b>

## **S5. Support Climate Resilience through Transportation System Improvements and Protections for Natural and Working Lands**

	<b>Action</b>
<b>S5.1</b>	<b>Develop Climate Risk Assessment Planning and Implementation Guidance</b>
<b>S5.2</b>	<b>Update SHOPP and SB 1 Competitive Program Guidelines to Incentivize Climate Adaptation and Climate Risk Assessments/Strategies</b>
<b>S5.3</b>	<b>Explore Incentivizing Land Conservation through Transportation Programs</b>

## **S6. Support Local and Regional Innovation to Advance Sustainable Mobility**

	<b>Action</b>
<b>S6.1</b>	<b>Explore New Mechanisms to Mitigate Increases in Vehicle Miles Travelled (VMT) from Transportation Projects</b>
<b>S6.2</b>	<b>Convene an Equitable Roadway Pricing Working Group to Identify Implementation Pathways for Local and Regional Efforts</b>
<b>S6.3</b>	<b>Develop Interagency Framework for Project Evaluation Around Advancing Sustainable Communities</b>

## S7. Strengthen Transportation-Land Use Connections

	Action
S7.1	Leverage Transportation Investments to Incentivize Infill Housing Production
S7.2	Create a Working Group to Explore Potential Action to Address Direct and Indirect Displacement in Transportation Programs
S7.3	Explore a “Highways to Boulevards” Conversion Pilot Program

# Discussion

# CAPTI Next Steps

- Full Draft Plan Release & Start of Public Comment Period: 03/10/21
- Public Workshop: 03/18/21
- CTC Meeting Presentation on Draft Plan: 03/24/21
- CTC-CARB-HCD Joint Meeting Presentation on Draft Plan: 04/08/21
- Public Comment Period Closes: 04/16/21
- Final CAPTI Release: June 2021
- Submittal of Plan to Governor and Legislature by July 15, 2021