

Tulare County Association of Governments	Date: Monday, June 27, 2022 Time: 1:00 p.m. Place: Tulare County Human Resources and Development 2500 W. Burrell Avenue Visalia, CA 93291
Technical Advisory Committee	Date: Thursday, June 23, 2022 Time: 1:30 PM Place: Tulare County Association of Governments 210 N. Church Street, Suite B (Sequoia Conference Room) Visalia, CA 93291

ADDENDUM

NOTE: This meeting will allow Board Members and the public to participate in the meeting via Teleconference, pursuant to Assembly Bill 361, available at

https://leginfo.legislature.ca.gov/faces/billNavClient.xhtml?bill_id=202120220AB361

Zoom Meeting | Direct Link: <https://bit.ly/2Zt4BQY>

Toll Free Call in: 1(888) 475-4499 | **Meeting ID:** 744 710 0343 | **Passcode:** 82243742

Call in only instructions:

Enter your meeting ID followed by #, Enter # for participant ID, Enter the passcode followed by #.

In compliance with the Americans with Disabilities Act and the California Ralph M. Brown Act, if you need special assistance to participate in this meeting, including auxiliary aids, translation requests, or other accommodations, or to be able to access this agenda and documents in the agenda packet, please contact the TCAG office at 559-623-0450 at least 3 days prior to the meeting. If information is needed in another language, contact (559) 623-0450. Si se necesita esta información en español, llame (559) 623-0450. Kung ang kailangang impormasyon ay sa Tagalog, tawagan ang (559) 623-0450

Any staff reports and supporting materials provided to the board after the distribution of the agenda packet are available for public inspection at the TCAG office.

VIII. ASSOCIATION ACTION/DISCUSSION ITEMS

- E. Action: Adopt the Regional Housing Needs Allocation (RHNA) Methodology and Release Draft Regional Housing Needs Plan **(Pages 1-36)**
- L. Action: Adoption of Resolution: Approve Position Amendment and Compensation for Principal Regional Planner **(Pages 37-43)**

ADJOURN

TULARE COUNTY ASSOCIATION OF GOVERNMENTS
REGIONAL TRANSPORTATION PLANNING AGENCY
METROPOLITAN PLANNING ORGANIZATION

BOARD OF GOVERNORS	AGENCY	ALTERNATE
Larry Micari	Tulare County-District 1	Paula Clark
Pete Vander Poel, III - Chair	Tulare County-District 2	William Cushing
Amy Shuklian	Tulare County-District 3	Bill Whitlatch
Eddie Valero	Tulare County-District 4	Derek Williams
Dennis Townsend	Tulare County-District 5	Terren Brown
Maribel Reynosa	City of Dinuba	Linda Launer
Frankie Alves	City of Exeter	Steve Garver
Paul Boyer	City of Farmersville	Ruben Macareno
Ramona Caudillo	City of Lindsay	Hipolito Cerros
Martha A. Flores – Vice-Chair	City of Porterville	Milt Stowe
Terry Sayre	City of Tulare	Jose Sigala
Brian Poochigian	City of Visalia	<i>Vacant</i>
Rudy Mendoza	City of Woodlake	Florencio Guerra Jr
Greg Gomez	Public Transit Provider*	<i>Vacant</i>
Tyrone Holscher	Member-at-Large*	Shea Gowin
Vicki Riddle	Member-at-Large*	<i>Vacant</i>
Pamela K. Whitmire	Member-at-Large*	Julie Allen
Diana Gomez	Caltrans*	Michael Navarro

* Caltrans serves as an ex-officio member of the TCAG Policy Advisory Committee. At-large TCAG members and the Public Transit Provider representative are not members of the Tulare County Transportation Authority or Abandoned Vehicle Abatement Authority.

TCAG STAFF

Ted Smalley, Executive Director
 Ben Kimball, Deputy Executive Director
 Ben Giuliani, Executive Officer- LAFCO
 Leslie Davis, Finance Director
 Elizabeth Forte, Principal Regional Planner
 Roberto Brady, Principal Regional Planner
 Derek Winning, Senior Regional Planner
 Gabriel Gutierrez, Senior Regional Planner
 Kasia Poleszczuk, Senior Regional Planner
 Steven Ingoldsby, Senior Regional Planner
 Giancarlo Bruno, Regional Planner
 Sheela Bhongir, Regional Planner
 Gail Miller, Associate Regional Planner-EH Maria
 Garza, Associate Regional Planner-EH Jennifer
 Miller, Associate Regional Planner-EH Michele
 Boling, TCAG Accountant III
 Brideget Moore, TCAG Staff Services Analyst III
 Amie Kane, TCAG Administrative Clerk II Servando
 Quintanilla, TCAG Administrative Clerk II Holly
 Gallo, Office Assistant III

Office Address

Tulare County Association of Governments
 210 N. Church, Suite B
 Visalia, CA 93291
 P: (559) 623-0450
 F: (559) 733-6720
www.tularecog.org
www.tcmeasurer.com

TCRTA STAFF

Richard Tree, Executive Director – TCRTA

AGENDA ITEM VIII-E

June 27, 2022

Prepared by Steven Ingoldsby, TCAG Staff

SUBJECT:

Action: Adopt the Regional Housing Needs Allocation (RHNA) Methodology and Release Draft Regional Housing Needs Plan

BACKGROUND:

The Regional Housing Needs Assessment (RHNA) is a process by which the State Department of Housing and Community Development (HCD) predicts short-term housing needs for each region of the state using Department of Finance population and household growth projections (i.e., the RHNA Determination). The local Councils of Government (COGs) then work with member agencies to prepare a methodology to distribute the required household numbers (i.e., the RHNA Methodology). Through the RHNA process, each local agency receives a RHNA allocation, which is the number of housing units that each local agency must plan to accommodate during the RHNA planning period. This housing unit number is broken down into four income categories: very low-, low-, moderate-, and above moderate-income. The planning period for this RHNA cycle is June 30, 2023, to December 31, 2031 (8.5-year period).

Local agencies must have the RHNA allocation in order to update their General Plan Housing Elements. To get the Housing Elements certified, the State requires each agency to ensure that there is enough land with the proper zoning and infrastructure to allow those units to be constructed. Failure to have adequate sites zoned to the appropriate densities for low-income housing will generally lead to a Housing Element not being certified by HCD. This, in turn, usually leads to a loss of federal funding for housing projects and can expose local agencies to the threat of litigation.

TCAG has coordinated closely with the development of the RTP and SCS to develop a methodology to distribute the region-wise housing needs among the county agencies, consistent with the intent of State law. Generally, the total allocations to each agency have been divided up by population and historical housing trends in conjunction with the RTP and SCS.

The TCAG Board and HCD approved methodology includes a technique known as “regional income parity” that gives a smaller percentage of lower income housing units to jurisdictions that currently have a larger percentage of lower income households compared to the regional averages and ties the horizon year for regional income parity with the horizon year for the RTP/SCS.

DISCUSSION:

Regional Housing Needs Plan

The Regional Housing Needs Allocation (RHNA) methodology is incorporated into the Draft Regional Housing Needs Plan (RHNP). The adoption of the allocation starts a 45-day appeal period. Assuming no appeals, the Final RHNP will be brought back to the TCAG board for adoption at the August 2022 meeting.

RECOMMENDATION:

Adopt the RHNA methodology and release the Draft RHNP.

ATTACHMENTS:

Attachment 1 – Draft RHNP

REGIONAL HOUSING NEEDS PLAN

CYCLE 6 | JUNE 2022
Public Review Draft

Tulare County Association of Governments

210 North Church St. Ste. B
Visalia, CA 93291

559.623.0450
TCAGinfo@tularecag.ca.gov

TULARE COUNTY ASSOCIATION OF GOVERNMENTS

6th Cycle Regional Housing Needs Plan



Public Draft Review
June 2022

TABLE OF CONTENTS

Executive Summary	1
Section I: Introduction	
Overview of State Law, Regulatory Requirements, and the RHNA Process	5
RHNA Factors and Objectives.....	5
Regional Housing Needs Allocation Determination	7
Organization	8
Section II: The Process	
Determination from HCD	9
Jurisdictional Survey.....	9
Regional Housing Needs Advisory Committee	9
TCAG Board of Governors	10
HCD Review	10
Section III: Adopted RHNA Methodology and Allocations	
RHNA Allocations	11
Statutory Objectives	14
Appendices*	
1. RHNA Methodology	
2. Regional Housing Needs Determination Letter	
3. Housing Opportunities and Constraints Survey and Summary	
4. RHNA Methodology Consistency Determination Letter	
5. California Government Code Section 65584	

**Appendices 2 - 5 are forthcoming and will be provided with the Final Regional Housing Needs Plan*

LIST OF TABLES AND FIGURES

Table 1 - Final Regional Housing Needs Allocation by Income Tier.....	3
Table 2 – Total RHNA Determination.....	7
Figure 1 – Regional Income Parity 2046 Income Trendline.....	12
Table 3 – Methodology Income Parity by 2046	13
Table 4 – Final Jurisdictional Allocation by Income Tier.....	14

Executive Summary

State housing law assigns the responsibility for preparing the Regional Housing Needs Assessment (RHNA) for the Tulare County region to the Tulare County Association of Governments (TCAG). TCAG, and other California councils of governments (COGs), undertake the RHNA process prior to each housing element cycle. The Regional Housing Needs Plan (RHNP) describes the methodology developed to allocate the region's housing needs in four income categories (very low, low, moderate, and above moderate) among Tulare County's eight cities and the unincorporated county in accordance with the objectives and factors contained in State law.

The RHNA process begins with the RHNA Determination. The California Department of Housing and Community Development (HCD) issues a RHNA Determination to TCAG all other COGs in California to identify housing needs for each region of the state. The TCAG RHNA Determination is the total number of units that the jurisdictions within the Tulare County region must plan for in their housing elements. The Determination, which is divided into four income categories is based on California Department of Finance (DOF) and HCD population projections. HCD provided the Tulare County region a final RHNA Determination of 33,214 housing units on October 21, 2021. The RHNA Determination covers a planning period from June 30, 2023, through December 31, 2031.

TCAG Board of Governors

Larry Micari

District 1 Supervisor, Tulare County

Pete Vander Poel, III - Chair

District 2 Supervisor, Tulare County

Amy Shuklian

District 3 Supervisor, Tulare County

Eddie Valero

District 4 Supervisor, Tulare County

Dennis Townsend

District 5 Supervisor, Tulare County

Maribel Reynosa

Vice Mayor, City of Dinuba

Frankie Alves

Mayor Pro Tem, City of Exeter

Paul Boyer

Mayor, City of Farmersville

Ramona Caudillo

Mayor, City of Lindsay

Martha Flores

Vice Chair, Mayor, City of Porterville

Terry Sayre

Vice Mayor, City of Tulare

Brian Poochigian

District 3 Council Member, City of
Visalia

Rudy Mendoza

Mayor, City of Woodlake

Greg Gomez

Representative, Public Transit Provider

Members-at-Large

Tyrone Holscher

Vicki Riddle

Pamela Whitmire

Ex-Officio Caltrans Representative

Diana Gomez

Ex-Officio, Caltrans

The RHNA process (Government Code Section 65584 et seq.) requires TCAG to develop and adopt a methodology for allocating a portion of the RHNA Determination to each jurisdiction within the Tulare County region. Prior to adoption of the RHNA Methodology, TCAG staff consulted the Regional Housing Needs Advisory Committee which is comprised of representatives from each of the jurisdictions in the county, a building and development advocate and an affordable housing advocate (Self-Help Enterprises). Together, TCAG staff, the Regional Housing Needs Advisory Committee, and the TCAG Board considered different methodologies to allocate a portion of the RHNA Determination to each jurisdiction.

The RHNA Methodology (Methodology A – Regional Income Parity by 2046) was approved by the TCAG Board of Governors on December 6, 2021. An underlying principle of the RHNA Methodology is to ensure that affordable housing is equitably distributed throughout the region. The Methodology applies an adjustment factor based on disparities in household income across the TCAG region. The adjustment factor assigns a higher proportion of units affordable to lower income households to jurisdictions that currently have a lower proportion of affordable households compared to the regional average and assigns a lower proportion of affordable units to jurisdictions that currently have a higher proportion of affordable households than the regional average. The Methodology is intended to help the region achieve income parity (the same proportion of affordable units in each community) by 2046. Table 1 summarizes the overall allocation of units to each jurisdiction and the allocation by the four income categories. The RHNA Methodology is described in more detail in Section III.

Following adoption of the RHNA, each jurisdiction in the county must update its housing element consistent with the 2023-2031 RHNA and submit it to HCD for certification. The housing element must demonstrate that

Tulare County Regional Housing Needs Advisory Committee

Crystal Flores

City of Dinuba

Lisa Wallis-Dutra

City of Exeter & City of Farmersville

Edward Real

City of Lindsay

Jason Ridenour - Vice Chair

City of Porterville

Mike Miller

City of Tulare

Nick Mascia, City of Visalia

Rebecca Griswold

City of Woodlake

Mike Lane

Building/Development

Betsy McGovern-Garcia - Chair

Affordable Housing Advocate

adequate sites and zoning are available during the planning period to accommodate the RHNA for all income categories. HCD reviews each jurisdiction's housing element for compliance with State law.

Table 1 – Final Allocation by Income Tier

Final Allocation by Income Tier											
	Total RHNA Allocation	Affordable Allocation (Combined Low + Very Low Income)		Very - Low Income Allocation		Low Income Allocation		Moderate Income Allocation		Above Moderate Income Allocation	
	Units	Units	Percent of Total RHNA	Units	Percent of Total RHNA	Units	Percent of Total RHNA	Units	Percent of Total RHNA	Units	Percent of Total RHNA
Dinuba	1,588	625	39.4%	387	24.4%	238	15.0%	268	16.9%	695	43.8%
Exeter	844	318	37.7%	197	23.3%	121	14.3%	146	17.3%	380	45.0%
Farmersville	654	218	33.3%	135	20.6%	83	12.7%	121	18.5%	315	48.2%
Lindsay	789	151	19.1%	93	11.8%	58	7.4%	178	22.6%	460	58.3%
Porterville	4,064	1,409	34.7%	872	21.5%	537	13.2%	739	18.2%	1,916	47.1%
Tulare	4,749	2,319	48.8%	1,435	30.2%	884	18.6%	677	14.3%	1,753	36.9%
Visalia	10,791	6,047	56.0%	3,741	34.7%	2,306	21.4%	1,321	12.2%	3,423	31.7%
Woodlake	492	122	24.8%	75	15.2%	47	9.6%	103	20.9%	267	54.3%
Unincorporated County	9,243	2,526	27.3%	1,563	16.9%	963	10.4%	1,870	20.2%	4,847	52.4%
Total	33,214	13,735	41.4%	8,497	25.6%	5,238	15.8%	5,424	16.3%	14,055	42.3%

Note: Percentages may not sum to 100 percent due to rounding

Source: TCAG 2022

This page intentionally left blank.

SECTION I: INTRODUCTION

Overview of State Law, Regulatory Requirements, and the RHNA Process

State housing law assigns the responsibility for preparing the Regional Housing Needs Assessment (RHNA) for the Tulare County region to the Tulare County Association of Governments (TCAG). TCAG and other California councils of governments (COGs), undertake the RHNA process prior to each housing element cycle. The current RHNA is for the sixth housing element cycle and covers an 8.5-year projection period (June 30, 2023 – December 31, 2031).

The RHNA process for the Tulare County region was initiated in September 2020 and is anticipated to be completed in August 2022 with the adoption of the Regional Housing Needs Plan (RHNP). The RHNP describes the methodology developed to allocate the region's housing needs in four income categories (very low, low, moderate, and above moderate) among the eight cities and the unincorporated county.

RHNA Factors and Objectives

Factors

State law requires that the following factors to be evaluated and considered where appropriate when developing the methodology per Government Code Section 65584.04(e).

- 1) Existing and projected jobs and housing relationship, particularly low-wage jobs and affordable housing
- 2) Lack of capacity for sewer or water service due to decisions outside jurisdiction's control
- 3) Availability of land suitable for urban development
- 4) Lands protected from urban development under existing federal or state programs
- 5) County policies to preserve prime agricultural land
- 6) Distribution of household growth in the Regional Transportation Plan (RTP) and opportunities to maximize use of transit and existing transportation infrastructure

- 7) Agreements to direct growth toward incorporated areas
- 8) Loss of deed-restricted affordable units
- 9) Households paying more than 30 percent and more than 50 percent of their income in rent
- 10) The rate of overcrowding
- 11) Housing needs of farmworkers
- 12) Housing needs generated by a university within the jurisdiction
- 13) Housing needs of individuals and families experiencing homelessness
- 14) Units lost during a state of emergency that have yet to be replaced
- 15) The region's greenhouse gas (GHG) emissions targets

Objectives

California Government Code Section 65584(d) identifies the following five objectives that adopted allocation methodology must further:

- 1) Increasing the housing supply and the mix of housing types, tenure, and affordability in all cities and counties within the region in an equitable manner, which shall result in each jurisdiction receiving an allocation of units for low- and very low-income households.
- 2) Promoting infill development and socioeconomic equity, the protection of environmental and agricultural resources, the encouragement of efficient development patterns, and the achievement of the region's greenhouse gas reductions targets provided by the State Air Resources Board pursuant to Section 65080.
- 3) Promoting an improved intraregional relationship between jobs and housing including an improved balance between the number of low-wage jobs and the number of housing units affordable to low-wage workers in each jurisdiction.
- 4) Allocating a lower proportion of housing need to an income category when a jurisdiction already has a disproportionately high share of households in that income category, as compared to the countywide distribution of households in that category from the most recent American Community Survey.

- 5) Affirmatively furthering fair housing. For purposes of this section, “affirmatively furthering fair housing” means taking meaningful actions, in addition to combating discrimination, that overcome patterns of segregation and foster inclusive communities free from barriers that restrict access to opportunity based on protected characteristics. Specifically, affirmatively furthering fair housing means taking meaningful actions that, taken together, address significant disparities in housing needs and in access to opportunity, replacing segregated living patterns with truly integrated and balanced living patterns, transforming racially and ethnically concentrated areas of poverty into areas of opportunity, and fostering and maintaining compliance with civil rights and fair housing laws.

Affirmatively furthering fair housing (AFFH) is a new required objective that was added for the 6th cycle the RHNA methodology.

Regional Housing Needs Allocation Determination

The RHNP assigns each jurisdiction part of the RHNA Determination, issued by HCD. The TCAG RHNA Determination is the total number of housing units that the jurisdictions within the Tulare County region must collectively plan to accommodate between June 30, 2023, and December 31, 2031. The RHNA Determination, which is divided into four income categories, is based on California Department of Finance (DOF) and HCD population projections. Table 2 shows the breakdown of the RHNA Determination by the four income categories.

Table 2 – Total RHNA Determination

Table 2: Total RHNA Determination by Income Category		
Income Category	Housing Units	Percent
Very Low	8,497	25.6%
Low	5,238	15.8%
Moderate	5,424	16.3%
Above Moderate	14,055	42.3%
Total	33,214	100.0%

Source: California Department of Housing and Community Development

Organization

The RHNA is organized into three sections:

Section I: Introduction, which provides background information, overview of State law and regulations, the objectives and factors for the RHNA, and the RHNA determination

Section II: The RHNA Process

Section III. Adopted RHNA Methodology and Allocation, which provides a detailed description of the adopted RHNA Methodology

The appendices include the RHNA Methodology, the survey sent to the jurisdictions and a summary of the results, the Regional Housing Needs Determination Letter from HCD, documents related to the development of the RHNA Methodology, and California Government Code Section 65584.

SECTION II: THE RHNA PROCESS

The 6th Cycle RHNA methodology was informed by input from stakeholders and developed in close coordination with the Regional Housing Needs Advisory Committee, with consultation with HCD, and with oversight from the TCAG Board of Governors.

Determination from HCD

The RHNA process began in September 2020 when TCAG began working with HCD regarding the RHNA Determination. In May 2021 HCD provided TCAG a draft RHNA Determination. On October 27, 2021, HCD provided a final RHNA Determination of 33,214 housing units for the 8.5 RHNA period. (See Appendix 2 for HCD determination letter to TCAG)

Jurisdiction Survey

In February 2021, an initial data request and survey was sent to each jurisdiction in conjunction with the Regional Transportation Plan (RTP) data request and survey. In April 2021, a follow-up survey was sent to each jurisdiction to identify additional data and information that could inform the objectives that the RHNA is required to advance and/or the factors required for consideration when developing the RHNA methodology to the extent that sufficient data is available.

The results of the survey were discussed at subsequent Regional Housing Needs Advisory committee meetings. A copy of the survey and a summary of the survey results are included in Appendix 3.

Regional Housing Needs Advisory Committee

The Regional Housing Needs Advisory Committee consisted of a representative from each of the jurisdictions, a building and development representative and an affordable housing advocate (Self-Help Enterprises). The representative from Self-Help Enterprises was selected as the chair of the Regional Housing Needs Advisory committee.

The Committee met on November 19, 2020, March 25, 2021, April 22, 2021, June 24, 2021, September 23, 2021, October 28, 2021. During the meetings, the committee reviewed the process and goals of the RHNA and engaged in thoughtful discussions regarding the survey results and of the RHNA methodology.

At the October 28, 2021 committee meeting, the committee unanimously recommended Methodology A -Regional Income Parity by 2046 for adoption.

TCAG Board of Governors

The TCAG Board of Governors is comprised of one representative from each of the eight cities, the five members of the County Board of Supervisors, and three members-at-large. Board members and the members of the public were given opportunities to review, comment, and ask questions about the RHNA Determination and Methodology.

State law requires TCAG to release the Proposed RHNA Methodology for public review and comment period. The comment period gives the public and each jurisdiction an opportunity to provide comments on the RHNA Methodology. The public review and comment period for the TCAG Proposed RHNA Methodology ran for 30 days from December 6, 2021, to January 6, 2022. The TCAG Board of Governors approved and adopted the RHNA Methodology at their December 6, 2021, meeting subject to receiving no additional comments during the 30-day review period. No additional comments were received. Based on the adopted RHNA Methodology, TCAG is releasing the RHNA Allocations as a part of this document, the Draft Regional Housing Needs Plan (RHNP). State law establishes that if any jurisdiction proposes a revision to the RHNA Allocations, TCAG “shall accept the proposed revision, modify its earlier determination, or indicate based upon available data and accepted planning methodology, why the proposed revision is inconsistent with the regional housing need.” If after 45 days no revisions are requested, TCAG will adopt the Final RHNP at the August 15, 2022, TCAG Board of Governors meeting.

HCD Review

Pursuant to Government Code Section 65584.04(i), HCD is required to review the draft RHNA Methodology to determine whether it furthers the statutory objectives described in Government Code Section 65584(d). The draft allocation methodology was submitted to HCD on January 24, 2022, for review. On March 24, 2022, HCD completed its review of the methodology and found that the draft RHNA Methodology furthers the statutory objectives described in Government Code 65584(d) (See Appendix 4) HCD’s review includes a detailed analysis of how the draft methodology furthers each of the statutory objectives.

SECTION III: ADOPTED RHNA METHODOLOGY AND ALLOCATIONS

The regional housing determination provided by HCD includes both a total number of housing units and a distribution of those units across four affordability tiers: very low-income, moderate-income, and above-moderate income (see Table 2 above).

RHNA Allocations

The approved methodology uses the following process to distribute the housing units:

Step 1 – Calculate the Total RHNA Allocation by Jurisdiction.

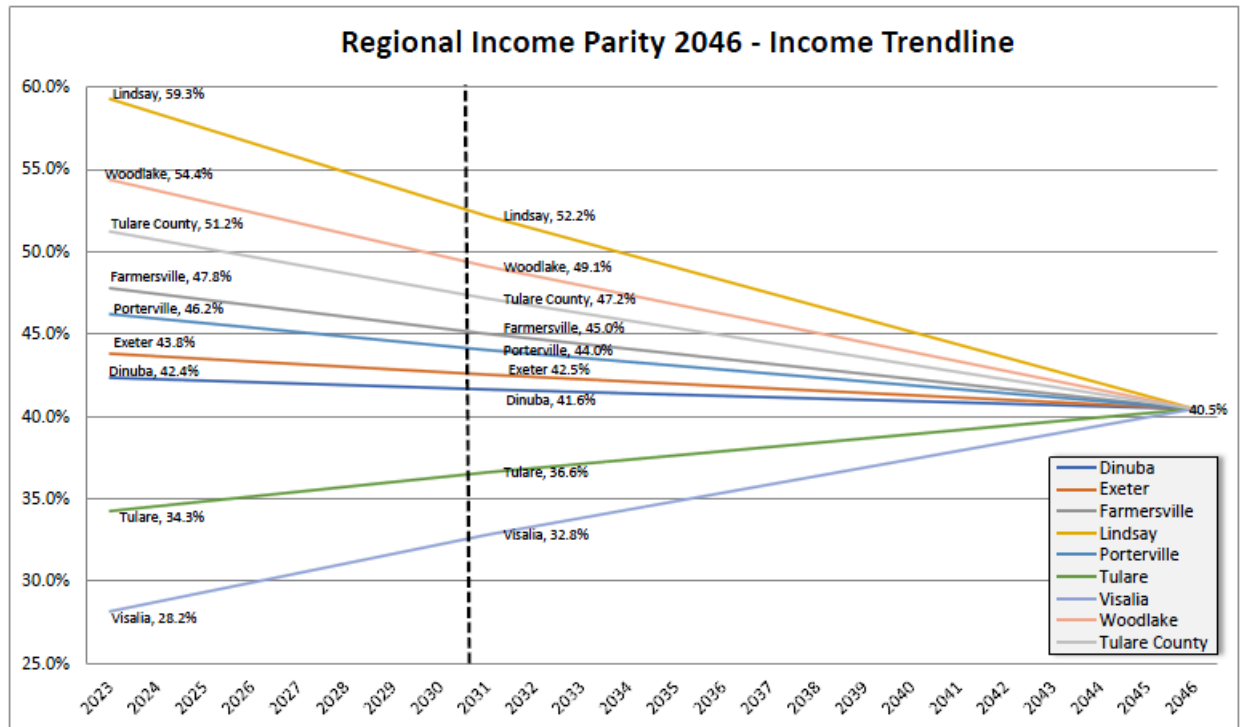
The regional control totals used for the RHNA, RTP, and Sustainable Communities Strategy (SCS) are perfectly consistent and are based upon the DOF/HCD projections for population (within 1.5%) and the exact projection for households. Subregional allocations were based upon the existing 2021 population, housing, jobs distribution within the region consistent with the 2009 Regional Blueprint

Step 2 – Calculate the Affordable RHNA by Jurisdiction

The methodology establishes a trendline for each jurisdiction to determine the percentage of new housing units that must be affordable in order for all jurisdictions to achieve “regional income parity” (i.e., an equal percentage of affordable housing units by a specific future date) (see Figures 2,3, and 4). Jurisdictions that currently have a higher proportion of lower-income households compared to the current regional average, are expected to plan for a lower proportional share of affordable units. Conversely, jurisdictions that currently have a lower share of lower-income households compared to the regional average are expected to plan for a higher percentage of affordable units.

The methodology uses an Income Parity Trendline to assign the number of units necessary for each jurisdiction to be trending towards regional income parity by 2046, the horizon year for the RTP/SCS. See Figure 1 and Table 3 below.

Figure 1 – Regional Income Parity 2046 | Income Trendline



Sources

2023 affordable percentages: 2019 ACS

2046 income parity percentages: 2019 ACS (existing countywide average)

2031 affordable percentages: Calculated using a trendline between 2023 affordable percentage and 2046 income parity percentage

Table 3 – Methodology | Income Parity by 2046

Methodology - Income Parity by 2046											
	Total Housing Units June 2023	Total Housing Units December 2031	Net New Housing Units (2023-2031)	Existing Percentage of Affordable Units	2023 Affordable Units	2031 Intersection of 2046 Income Parity Trendline	Regional Parity	Total Affordable Units in 2031 to Reach Income Parity	2023 - 2031 Affordable Allocation		Percent Affordable Allocation
									Units	Percent of Total	
	A	B	C	D	E	F	G	H	I	J	K
Dinuba	7,181	8,769	1588	42.4%	3041	41.64%	40.5%	3651	625	5%	39.4%
Exeter	3,854	4,698	844	43.8%	1688	42.55%	40.5%	1999	318	2%	37.7%
Farmersville	2,957	3,611	654	47.8%	1413	45.02%	40.5%	1626	218	2%	33.3%
Lindsay	3,715	4,503	789	59.3%	2202	52.17%	40.5%	2349	151	1%	19.1%
Porterville	19,123	23,187	4064	46.2%	8837	44.04%	40.5%	10211	1409	10%	34.7%
Tulare	22,349	27,097	4749	34.3%	7655	36.60%	40.5%	9917	2319	17%	48.8%
Visalia	50,729	61,521	10791	28.2%	14286	32.81%	40.5%	20183	6047	44%	56.0%
Woodlake	2,332	2,824	492	54.4%	1268	49.12%	40.5%	1387	122	1%	24.8%
Unincorporated County	46,589	55,832	9243	51.2%	23868	47.16%	40.5%	26331	2526	18%	27.3%
Total	158,828	192,043	33214	40.5%	64260	40.44%	40.5%	77655	13735	100%	41.4%

Sources:

Column A: Control totals from TCAG Demographic Forecast

Column B: Control totals from TCAG Demographic Forecast

Column C: Column A subtracted from Column B

Column D: 2019 American Community Survey

Column E: Column A multiplied by Column D

Column F: Calculated using a trendline between Column D and Column G

Column G: 2019 American Community Survey (existing countywide average)

Column H: Column B multiplied by Column F

Column I: Column E subtracted from Column H and then proportionally adjusted to add up to countywide total of 13,735

Column K: Column I divided by Column C

Step 3 – Calculate the Jurisdictional Allocation by Income Tier

The final step is to distribute the remaining income categories proportionately to the allocations assigned to the region from HCD. Affordable allocations are the combination of very low and low which make up 61.9% and 38.1% of the affordable allocation respectively. Non-affordable allocations are the combination of moderate and above moderate which make up 27.8% and 72.2% of the non-affordable allocation respectively. For a detailed explanation of the methodology see Methodology A – Regional Income Parity 2046 in Appendix 1

The final jurisdictional allocation of units across all income tiers is shown in Table 4 below.

Table 4 – Final Jurisdictional Allocation by Income Tier

Income Parity by 2046	Total RHNA (Net New Housing Units 2023-2031)	Very Low Less than 50%		Low 50% - 80%		Moderate 80% - 120%		Above Moderate Greater than 120%	
Dinuba	1,588	387	24.4%	238	15.0%	268	16.9%	695	43.8%
Exeter	844	197	23.3%	121	14.3%	146	17.3%	380	45.0%
Farmersville	654	135	20.6%	83	12.7%	121	18.5%	315	48.2%
Lindsay	789	93	11.8%	58	7.4%	178	22.6%	460	58.3%
Porterville	4,064	872	21.5%	537	13.2%	739	18.2%	1,916	47.1%
Tulare	4,749	1,435	30.2	884	18.6%	677	14.3%	1,753	36.9%
Visalia	10,791	3,741	34.7%	2,306	21.4%	1,321	12.2%	3,423	31.7%
Woodlake	492	75	15.2%	47	9.6%	103	20.9%	267	54.3%
Unincorporated County	9,243	1,563	16.9%	963	10.4%	1,870	20.2%	4,847	52.4
Total	33,214	8,497	25.6%	5,238	15.8%	5,424	16.3%	14,055	42.3%

Statutory Objectives

In compliance with State law, the methodology furthers all statutory objectives as outlined below.

Objective 1: Increasing the housing supply and the mix of housing types, tenure, and affordability in all cities and counties within the region in an equitable manner, which shall result in each jurisdiction receiving an allocation of units for low- and very low-income households.

The methodology for allocating units in each income tier to achieve income parity by 2046 supports an equitable distribution of units such that the jurisdictions that currently have a lesser share of low- and very low-income units receive a larger allocation. The methodology allocates units in all four income tiers to each of the region's jurisdictions.

Objective 2: Promoting infill development and socioeconomic equity, the protection of environmental and agricultural resources, the encouragement of efficient development patterns and the achievement of the region's greenhouse gas reductions targets provided by the State Air Resources Board pursuant to Section 65080.

The methodology places the majority of the units in incorporated cities while still balancing the county's ability to invest in its disadvantaged unincorporated communities. The methodology is able to achieve this and by its incorporation in the RTP/SCS supports its ability to achieve regional GHG emission reduction targets.

Objective 3: Promoting an improved intraregional relationship between jobs and housing, including an improved balance between the number of low-wage jobs and the number of housing units affordable to low-wage workers in each jurisdiction.

The distribution of housing and jobs for the RTP/SCS was based upon the 2009 Regional Blueprint that sought to achieve livable walkable communities through a greater jobs housing balance and increased residential densities to support investments in transit and active transportation. The 2022 RTP/SCS goes even further and was designed to implement the RHNA and provide for Environmental Justice by introducing Cross-Valley Corridor affordable transit-oriented development with ATP enhancements at station locations and augmented by micro-transit for rural communities.

The 2022 RTP/SCS builds upon recent community planning efforts that plan and invest in all communities to improve the quality of life for residents. Housing, jobs, schools, parks, trails, and other transportation amenities are planned for in the RTP/SCS. The 2022 RTP/SCS allocates over 2/3 of the growth forecast to the relatively low vehicle miles traveled (VMT) areas of three (3) largest cities and within their respective spheres of influence where the largest job centers in the region are located. The region is also home to one of the most productive agricultural counties in the country and that workers in that industry tend to live in unincorporated communities near farms and processing plants.

The regional control totals used for the RHNA and RTP/SCS are perfectly consistent and are based upon the DOF/HCD projections for population (within 1.5%) and the exact projection for households.

Objective 4: Allocating a lower proportion of housing need to an income category when a jurisdiction already has a disproportionately high share of households in that income category, as compared to the countywide distribution of households in that category from the most recent American Community Survey.

TCAG addresses this objective by focusing the methodology's distribution of affordable units on achieving regional income parity by 2046. The jurisdictions with the lowest proportions of very low- and low-income households received the highest proportions of affordable housing units and the jurisdictions with the highest proportion of very low- and low-income households received the lowest proportion of affordable housing units.

Objective 5: Affirmatively furthering fair housing.

The methodology affirmatively furthers fair housing by allocating a higher proportion of very low- and low-income units to jurisdictions that have fewer low-income households

and by setting forth a path to achieve income parity by 2046 across the county. This methodology addresses significant disparities in housing needs and in access to opportunity and integrates rather than concentrates areas of poverty into areas of opportunity throughout the region.

APPENDICES

1. RHNA Methodology
2. Regional Housing Needs Determination Letter
3. Housing Opportunities and Constraints Survey and Summary
4. RHNA Methodology Consistency Determination Letter
5. California Government Code Section 65584

This page intentionally left blank

APPENDIX 1

RHNA Methodology

Appendix 1 – RHNA Methodology

This attachment describes three methodologies for the TCAG Regional Housing Needs Assessment (RHNA). All methodologies consider regional income parity. Methodology A, Regional Income Parity by 2046 is TCAG’s proposed methodology while Methodologies B and C are offered as alternatives.

Step 1. Calculating Total RHNA Allocations by Jurisdiction

The regional control totals used for the RHNA and RTP/SCS are perfectly consistent and are based upon the DOF/HCD projections for population (within 1.5%) and the exact projection for households. Subregional allocations were based upon the existing 2021 population, housing, jobs distribution within the region consistent with the 2009 Regional Blueprint.

The 2022 RTP/SCS implements the RHNA through its jobs housing balance and transportation investments in Environmental Justice Communities. The increased residential densities and transit-oriented development envisioned by the RTP/SCS are accomplished with a 52% multifamily housing component thereby increasing accessibility and affordability for each community.

To ensure consistency between the Regional Transportation Plan and Sustainable Communities Strategy (RTP/SCS) and the RHNA, under all methodologies, each jurisdiction receives the same total number of housing units that are consistent with the draft RTP/SCS. The difference in the methodologies is only in how they allocate the affordable units (i.e. very low + low-income units).

The following steps show how the proportion of units allocated to each jurisdiction in the housing unit control totals were used to determine the total RHNA allocation for each jurisdiction for the 8.5-year period. *(Note: The letters in parentheses correspond with the columns in Table X)*

Step 2. Calculating the Affordable RHNA Allocations by Jurisdiction

Methodologies A, B, and C reflect the underlying objectives of State housing law by being consistent with the SCS growth pattern and equitably distributing affordable housing among the jurisdictions in the county. They establish a trendline for each jurisdiction to determine the percentage of new housing units that must be affordable in order for all jurisdictions to achieve “regional income parity” (i.e. an equal percentage of affordable housing units by a specific future date) (see Figures 2,3, and 4). Jurisdictions that currently have a higher proportion of lower-income households compared to the current regional average, are expected to plan for a lower proportional share of affordable units. Conversely, jurisdictions that currently have a lower share of lower-income households compared to the regional average are expected to plan for a higher percentage of affordable units.

Methodologies A, B, and C use an Income Parity Trendline to assign the number of units necessary for each jurisdiction to be trending towards regional income parity by a specific future date. TCAG’s preferred methodology is Methodology A, which achieves income parity by 2046, the horizon year for the RTP/SCS. Methodology B achieves regional income parity by 2041, five years prior to the horizon year for the RTP/SCS. Methodology C achieves regional income parity by 2051, five years after the horizon year for the RTP/SCS. The earlier the income parity date, the more pronounced the affordable allocations for jurisdictions with existing proportions of lower-income households that are significantly higher or lower than the regional average. For example, jurisdictions that have a much lower existing proportion of lower-income households than the regional average would receive a higher affordable

allocation in Methodology B than in Methodology C because they need to “catch up” to the regional average by 2041 instead of 2051.

The following steps were used to calculate the affordable allocations for each jurisdiction using Methodologies A, B, and C. (See Tables 2, 3, and 4) (*Note: The letters in parentheses correspond with the columns in Tables 2, 3, and 4*)

1. The 2023 total affordable units (E) by multiple the 2023 total units (A) by the existing percentage of affordable households (D) in each jurisdiction based on the 2019 American Community Survey (ACS) estimate of lower-income households. The Regional Income Parity (G) is based on the existing countywide average percentage of lower-income households from the 2019 ACS.
2. Methodology A – Regional Income Parity by 2046 (Proposed Methodology)

The December 2023 intersection of the income parity trendline (F) was calculated by establishing a trendline between each jurisdiction’s 2023 percentage of affordable households (D) and the 2046 income parity percentage of 40.5 percent (G) (i.e., the existing countywide average percentage of affordable households). This trendline is intersected at December 2031 (F) to determine what percentage of affordable households each jurisdiction should have by December 2031 in order to be trending towards income parity by 2046.

Methodology B – Regional Income Parity by 2041

The December 2023 intersection of the income parity trendline (F) was calculated by establishing a trendline between each jurisdiction’s 2023 percentage of affordable households (D) and the 2041 income parity percentage of 40.5 percent (G) (i.e., the existing countywide average percentage of affordable households). This trendline is intersected at December 2031 (F) to determine what percentage of affordable households each jurisdiction should have by December 2031 in order to be trending towards income parity by 2041.

Methodology C – Regional Income Parity by 2051

The December 2023 intersection of the income parity trendline (F) was calculated by establishing a trendline between each jurisdiction’s 2023 percentage of affordable households (D) and the 2051 income parity percentage of 40.5 percent (G) (i.e., the existing countywide average percentage of affordable households). This trendline is intersected at December 2031 (F) to determine what percentage of affordable households each jurisdiction should have by December 2031 in order to be trending towards income parity by 2051.

3. Total affordable units on December 2031, (H) were calculated by multiplying total housing units in June 2023 (B) with the December 2031 intersection of the income parity trendline (F)
4. The 2023-2031 affordable allocations (I) were calculated by subtracting the 2023 units (E) from the total affordable units in December 2031, needed to reach income parity (H) and then

proportionally scaled to equal the countywide affordable allocation of 13,735 (net new housing units multiplied by 40.5 percent)

Step 3. Calculating the jurisdictional allocation by income tier

The final step is to distribute the remaining income categories proportionately to the allocations assigned to the region from HCD (see Figure 1). Affordable allocations are the combination of very low and low which make up 61.9% and 38.1% of the affordable allocation respectively. Non-affordable allocations are the combination of moderate and above moderate which make up 27.8% and 72.2% of the non-affordable allocation respectively.

For example, in Table 5, Distribution by Income Category for Income Parity by 2046, Dinuba receives an affordable allocation of 625 units from the 2046 Regional Income Parity methodology in Table 2. The very low-income category receives 387 units which is 61.9% of the affordable category and 238 low-income category units which is 38.1% of the affordable category. The non-affordable income category takes the remaining units (1,588 total units less 625 affordable units) and assigns 268 units to the moderate category which is 27.8% of the non-affordable units assigned to Dinuba and 695 units to the above moderate-income category which is 72.2% of the non-affordable units assigned to Dinuba.

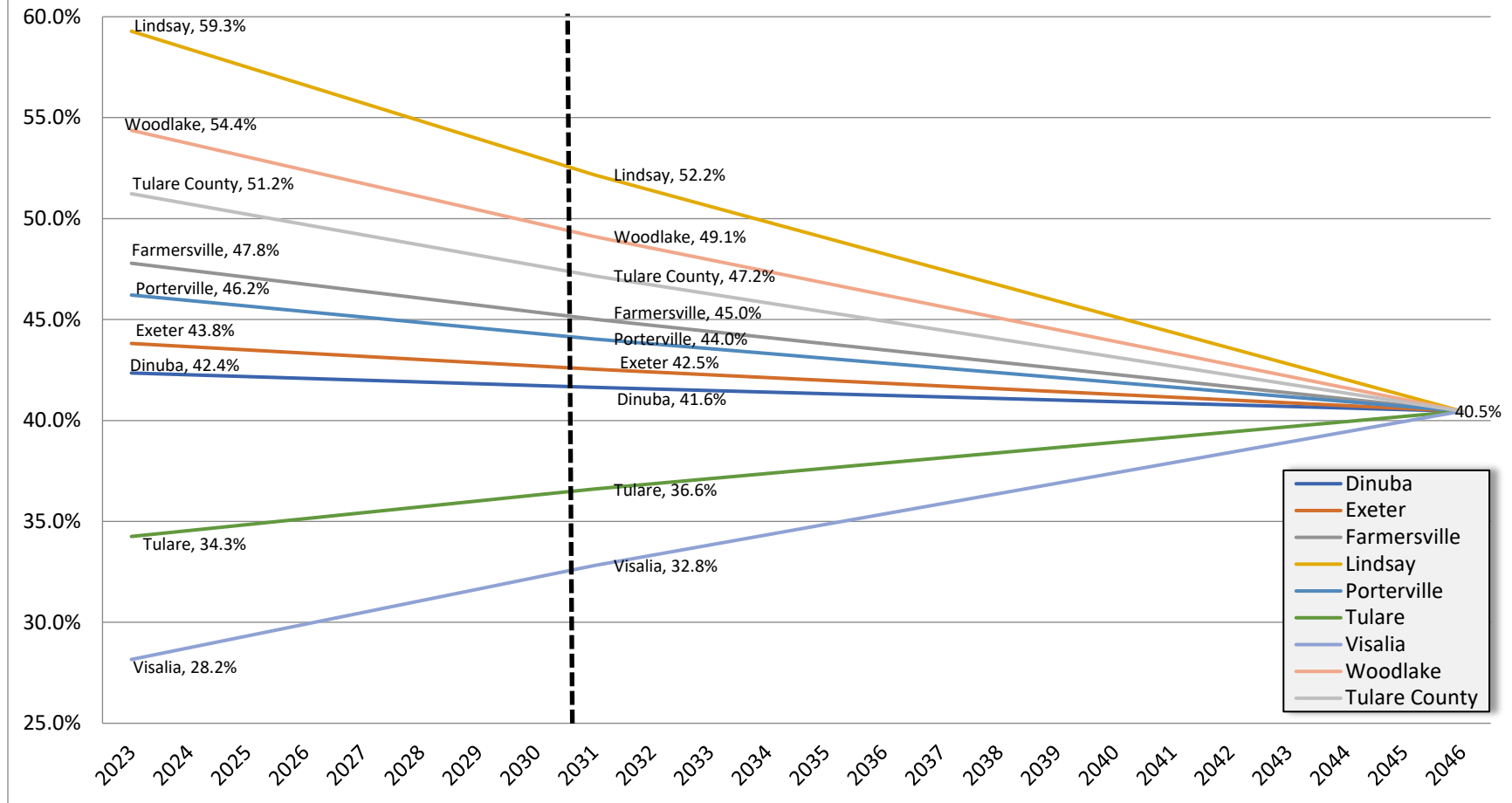
Figure 1
HCD Regional Housing Need Allocation (RHNA)
Determination

Tulare COG		
June 30, 2023 through December 31, 2031		
<u>Income Category</u>	<u>Percent</u>	<u>Housing Unit Need</u>
Very-Low *	25.6%	8,497
Low	15.8%	5,238
Moderate	16.3%	5,424
Above-Moderate	42.3%	14,055
Total	100.0%	33,214

* Extremely-Low 12.7% included in Very-Low Category

Income Distribution: Income categories are prescribed by California Health and Safety Code (Section 50093, et.seq.). Percents are derived based on ACS reported household income brackets and county median income.

Figure 2 - Regional Income Parity 2046 - Income Trendline



Sources

2023 affordable percentages: 2019 ACS

2046 income parity percentages: 2019 ACS (existing countywide average)

2031 affordable percentages: Calculated using a trendline between 2023 affordable percentage and 2046 income parity percentage

Table 2 Methodology - Income Parity by 2046

	Total Housing Units June 2023	Total Housing Units December 2031	Net New Housing Units (2023-2031)	Existing Percentage of Affordable Units	2023 Affordable Units	2031 Intersection of 2046 Income Parity Trendline	Regional Parity	Total Affordable Units in 2031 to Reach Income Parity	Draft 2023 - 2031 Affordable Allocation		Percent Affordable Allocation
									Units	Percent of Total	
	A	B	C	D	E	F	G	H	I	J	K
Dinuba	7,181	8,769	1588	42.4%	3041	41.64%	40.5%	3651	625	5%	39.4%
Exeter	3,854	4,698	844	43.8%	1688	42.55%	40.5%	1999	318	2%	37.7%
Farmersville	2,957	3,611	654	47.8%	1413	45.02%	40.5%	1626	218	2%	33.3%
Lindsay	3,715	4,503	789	59.3%	2202	52.17%	40.5%	2349	151	1%	19.1%
Porterville	19,123	23,187	4064	46.2%	8837	44.04%	40.5%	10211	1409	10%	34.7%
Tulare	22,349	27,097	4749	34.3%	7655	36.60%	40.5%	9917	2319	17%	48.8%
Visalia	50,729	61,521	10791	28.2%	14286	32.81%	40.5%	20183	6047	44%	56.0%
Woodlake	2,332	2,824	492	54.4%	1268	49.12%	40.5%	1387	122	1%	24.8%
Unincorporated County	46,589	55,832	9243	51.2%	23868	47.16%	40.5%	26331	2526	18%	27.3%
Total	158,828	192,043	33214	40.5%	64260	40.44%	40.5%	77655	13735	100%	41.4%

Sources:

Column A: Control totals from TCAG Demographic Forecast

Column B: Control totals from TCAG Demographic Forecast

Column C: Column A subtracted from Column B

Column D: 2019 American Community Survey

Column E: Column A multiplied by Column D

Column F: Calculated using a trendline between Column D and Column G

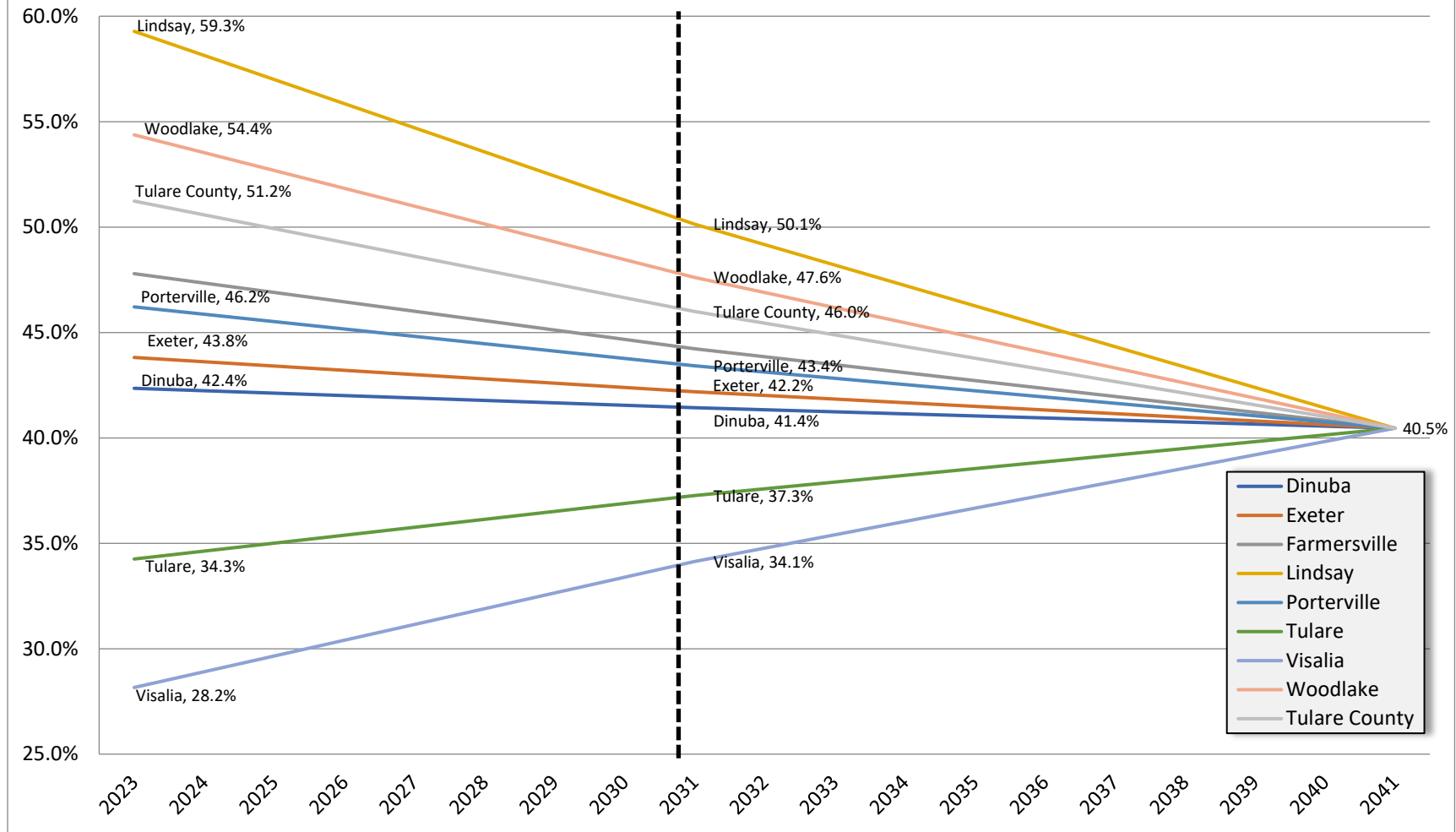
Column G: 2019 American Community Survey (existing countywide average)

Column H: Column B multiplied by Column F

Column I: Column E subtracted from Column H and then proportionally adjusted to add up to countywide total of 13,735

Column K: Column I divided by Column C

Figure 3 - Regional Income Parity 2041 - Income Trendline



Sources

2023 affordable percentages: 2019 ACS

2046 income parity percentages: 2019 ACS (existing countywide average)

2031 affordable percentages: Calculated using a trendline between 2023 affordable percentage and 2041 income parity percentage

Table 3 - Income Parity by 2041

	Total Housing Units June 2023	Total Housing Units December 2031	Net New Housing Units (2023-2031)	Existing Percentage of Affordable Units	2023 Affordable Units	2031 Intersection of 2046 Income Parity Trendline	Regional Parity (Current)	Total Affordable Units 2031 to Reach Income Parity	Final 2023 - 2031 Affordable Allocation		Percent Affordable Allocation
									Units	Percent of Total	
	A	B	C	D	E	F	G	H	I	J	K
Dinuba	7,181	8,769	1588	42.4%	3041	41.43%	40.5%	3633	606	4%	38.2%
Exeter	3,854	4,698	844	43.8%	1688	42.18%	40.5%	1982	300	2%	35.5%
Farmersville	2,957	3,611	654	47.8%	1413	44.23%	40.5%	1597	188	1%	28.7%
Lindsay	3,715	4,503	789	59.3%	2202	50.14%	40.5%	2258	56	0%	7.1%
Porterville	19,123	23,187	4064	46.2%	8837	43.42%	40.5%	10067	1260	9%	31.0%
Tulare	22,349	27,097	4749	34.3%	7655	37.27%	40.5%	10099	2504	18%	52.7%
Visalia	50,729	61,521	10791	28.2%	14286	34.13%	40.5%	21000	6883	50%	63.8%
Woodlake	2,332	2,824	492	54.4%	1268	47.61%	40.5%	1345	79	1%	16.1%
Unincorporated County	46,589	55,832	9243	51.2%	23868	46.00%	40.5%	25682	1859	14%	20.1%
Total	158,828	192,043	33214	40.5%	64260	40.44%	40.5%	77655	13735	100%	41.4%

Sources:

Column A: Control totals from TCAG Demographic Forecast

Column B: Control totals from TCAG Demographic Forecast

Column C: Column A subtracted from Column B

Column D: 2019 American Community Survey

Column E: Column A multiplied by Column D

Column F: Calculated using a trendline between Column D and Column G

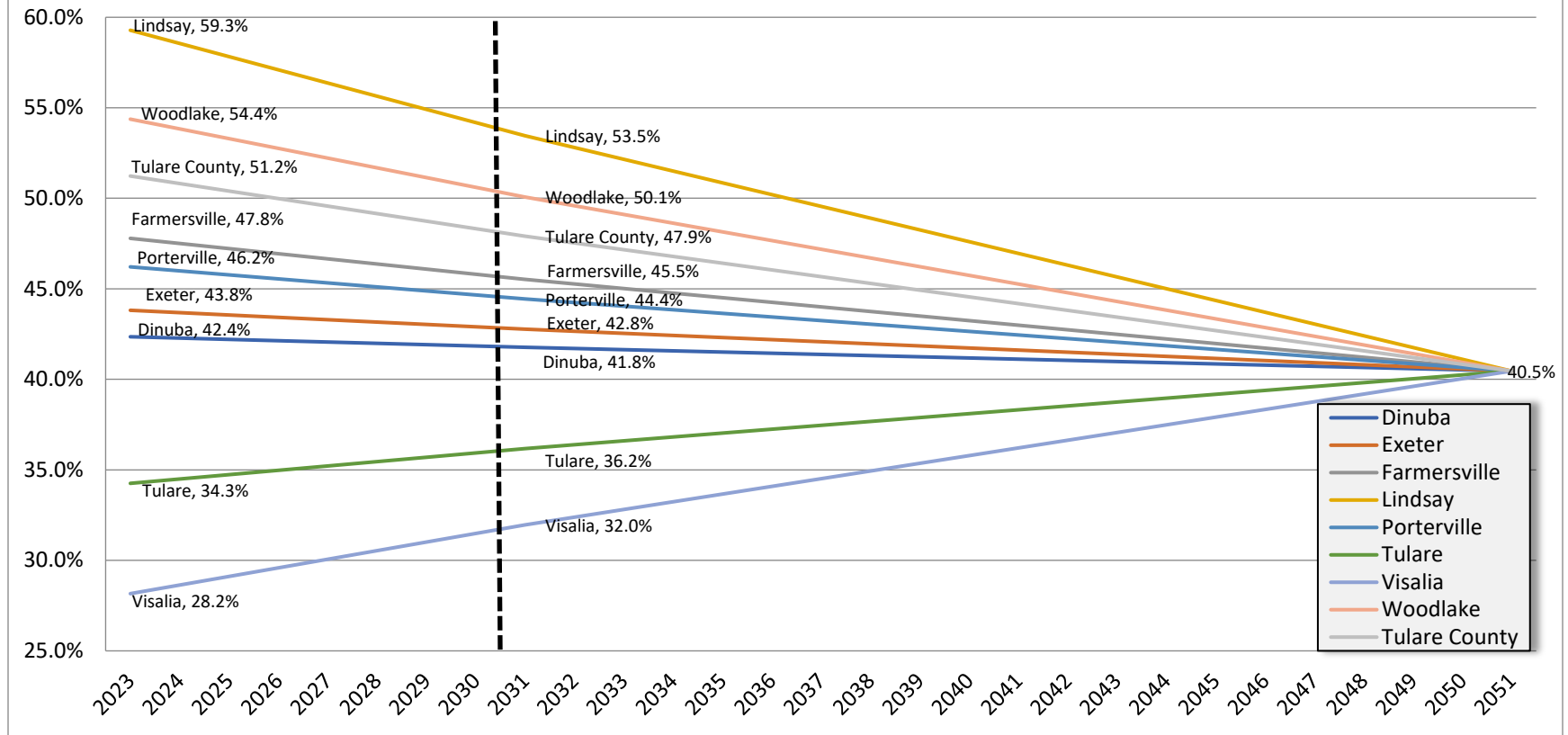
Column G: 2019 American Community Survey (existing countywide average)

Column H: Column B multiplied by Column F

Column I: Column E subtracted from Column H and then proportionally adjusted to add up to countywide total of 13,735

Column K: Column I divided by Column C

Figure 4 - Regional Income Parity 2051 - Income Trendline



Sources

2023 affordable percentages: 2019 ACS

2046 income parity percentages: 2019 ACS (existing countywide average)

2031 affordable percentages: Calculated using a trendline between 2023 affordable percentage and 2051 income parity percentage

Table 4: Base Methodology - Income Parity by 2051

	Total Housing Units June 2023	Total Housing Units December 2031	Net New Housing Units (2023-2031)	Existing Percentage of Affordable Units	2023 Affordable Units	2031 Intersection of 2046 Income Parity Trendline	Regional Parity (Current)	Total Affordable Units 2031 to Reach Income Parity	Final 2023 - 2031 Affordable Allocation		Percent Affordable Allocation
									Units	Percent of Total	
	A	B	C	D	E	F	G	H	I	J	K
Dinuba	7,181	8,769	1588	42.4%	3041	41.77%	40.5%	3663	637	5%	40.1%
Exeter	3,854	4,698	844	43.8%	1688	42.78%	40.5%	2010	329	2%	39.0%
Farmersville	2,957	3,611	654	47.8%	1413	45.52%	40.5%	1644	237	2%	36.2%
Lindsay	3,715	4,503	789	59.3%	2202	53.46%	40.5%	2408	211	2%	26.8%
Porterville	19,123	23,187	4064	46.2%	8837	44.43%	40.5%	10303	1504	11%	37.0%
Tulare	22,349	27,097	4749	34.3%	7655	36.17%	40.5%	9802	2202	16%	46.4%
Visalia	50,729	61,521	10791	28.2%	14286	31.96%	40.5%	19663	5515	40%	51.1%
Woodlake	2,332	2,824	492	54.4%	1268	50.07%	40.5%	1414	150	1%	30.5%
Unincorporated County	46,589	55,832	9243	51.2%	23868	47.90%	40.5%	26744	2950	21%	31.9%
Total	158,828	192,043	33214	40.5%	64260	40.44%	40.5%	77655	13735	100%	41.4%

Sources:

Column A: Control totals from TCAG Demographic Forecast

Column B: Control totals from TCAG Demographic Forecast

Column C: Column A subtracted from Column B

Column D: 2019 American Community Survey

Column E: Column A multiplied by Column D

Column F: Calculated using a trendline between Column D and Column G

Column G: 2019 American Community Survey (existing countywide average)

Column H: Column B multiplied by Column F

Column I: Column E subtracted from Column H and then proportionally adjusted to add up to countywide total of 13,735

Column K: Column I divided by Column C

TABLE 5 – Distribution by Income Category for Income Parity by 2046

Income Parity by 2046	Total RHNA (Net New Housing Units 2023-2031)	Methodology Affordable Allocation	Very Low less than 50%		Low 50% - 80%		Moderate 80% - 120%		Above Moderate greater than 120%	
Dinuba	1,588	625	387	24.4%	238	15.0%	268	16.9%	695	43.8%
Exeter	844	318	197	23.3%	121	14.3%	146	17.3%	380	45.0%
Farmersville	654	218	135	20.6%	83	12.7%	121	18.5%	315	48.2%
Lindsay	789	151	93	11.8%	58	7.4%	178	22.6%	460	58.3%
Porterville	4,064	1,409	872	21.5%	537	13.2%	739	18.2%	1,916	47.1%
Tulare	4,749	2,319	1,435	30.2%	884	18.6%	677	14.3%	1,753	36.9%
Visalia	10,791	6,047	3,741	34.7%	2,306	21.4%	1,321	12.2%	3,423	31.7%
Woodlake	492	122	75	15.2%	47	9.6%	103	20.9%	267	54.3%
Unincorporated County	9,243	2,526	1,563	16.9%	963	10.4%	1,870	20.2%	4,847	52.4%
Total	33,214	13,735	8,497	25.6%	5,238	15.8%	5,424	16.3%	14,055	42.3%

TABLE 6 – Distribution by Income Category for Income Parity by 2041

Income Parity by 2041	Total RHNA (Net New Housing Units 2023-2031)	Methodology Affordable Allocation	Very Low less than 50%		Low 50% - 80%		Moderate 80% - 120%		Above Moderate greater than 120%	
Dinuba	1,588	606	375	23.6%	231	14.5%	273	17.2%	709	44.6%
Exeter	844	300	186	22.0%	114	13.5%	151	17.9%	393	46.6%
Farmersville	654	188	116	17.7%	72	11.0%	130	19.9%	336	51.4%
Lindsay	789	56	35	4.4%	21	2.7%	204	25.9%	529	67.0%
Porterville	4,064	1,260	779	19.2%	481	11.8%	781	19.2%	2,023	49.8%
Tulare	4,749	2,504	1,549	32.6%	955	20.1%	625	13.2%	1,620	34.1%
Visalia	10,791	6,883	4,258	39.5%	2,625	24.3%	1,088	10.1%	2,820	26.1%
Woodlake	492	79	49	10.0%	30	6.1%	115	23.4%	298	60.6%
Unincorporated County	9,243	1,859	1,150	12.4%	709	7.7%	2,056	22.2%	5,328	57.6%
Total	33,214	13,735	8,497	25.6%	5,238	15.8%	5,424	16.3%	14,055	42.3%

TABLE 7 – Distribution by Income Category for Income Parity by 2051

Income Parity by 2051	Total RHNA (Net New Housing Units 2023-2031)	Methodology Affordable Allocation	Very Low less than 50%		Low 50% - 80%		Moderate 80% - 120%		Above Moderate greater than 120%	
Dinuba	1,588	637	394	24.8%	243	15.30%	265	16.7%	686	43.2%
Exeter	844	329	204	24.2%	125	14.81%	143	16.9%	372	44.1%
Farmersville	654	237	147	22.5%	90	13.76%	116	17.7%	301	46.0%
Lindsay	789	211	131	16.6%	80	10.14%	161	20.4%	417	52.9%
Porterville	4,064	1,504	930	22.9%	574	14.12%	713	17.5%	1,847	45.4%
Tulare	4,749	2,202	1,362	28.7%	840	17.69%	709	14.9%	1,838	38.7%
Visalia	10,791	5,515	3,412	31.6%	2,103	19.49%	1,469	13.6%	3,807	35.3%
Woodlake	492	150	93	18.9%	57	11.59%	95	19.3%	247	50.2%
Unincorporated County	9,243	2,950	1,825	19.7%	1,125	12.17%	1,752	19.0%	4,541	49.1%
Total	33,214	13,735	8,497	25.6%	5,238	15.77%	5,424	16.3%	14,055	42.3%

Tulare County Association of Governments

AGENDA ITEM VIII-L

June 27, 2022

Prepared by Brideget Moore and Leslie Davis, TCAG Staff

SUBJECT:

Action: Adoption of Resolution: Approve Position Amendment and Compensation for Principal Regional Planner

BACKGROUND:

Annual review of the performance of the TCAG agency was done and the following is provided as a conceptual position recommendation. Recommendations are then provided to the TCAG Board for consideration followed by submission to County BOS for approval and implementation.

DISCUSSION:

An Annual review of the TCAG agency was conducted and along with additional funding provided by federal planning funds as well as ongoing state funding, it is recommended in order, to meet the growing needs of TCAG and provide planning services commensurate with expectations, a position amendment to current position number 08021- Regional/Associate Regional/Senior Regional Planner, be amended to a Principal Regional Planner.

1. Approve the amendment of a Regional/Associate Regional/Senior Regional Planner Flex position to a Principal Regional Planner.

Senior Regional Planner*

Salary Range	Step 1	Step 2	Step 3	Step 4	Step 5
Hourly	38.0586	39.9880	42.0152	44.1452	46.3832
Annually	79,162	83,175	87,392	91,822	96,477

Principal Regional Planner*

Salary Range	Step 1	Step 2	Step 3	Step 4	Step 5
Hourly	42.3773	44.5215	46.7786	49.1501	51.6418
Annually	88,137	92,605	97,299	102,232	107,415

*Positions to receive an 8% cost of living increase effective July 3, 2022.

2. Authorize the Executive Director to approve minor changes as necessary to implement the action.

ALTERNATIVES:

1. Approve recommendation as presented
2. Amend recommendations
3. Delay action or do not approve

FISCAL IMPACT:

The potential financial impact for FY 21/22 starting at step 1 or with step 5 is a difference of \$8,975 and a maximum of \$10,938 including benefits from the previous position. This position is primarily funded with state and federal planning funds.

ATTACHMENTS:

1. Resolution to Approve the Amended Position
2. Job Description and Compensation Details

BEFORE THE
TULARE COUNTY ASSOCIATION OF GOVERNMENTS
COUNTY OF TULARE, STATE OF CALIFORNIA

In the matter of:

APPROVING TCAG POSITION AMENDMENT)
AND COMPENSATION FOR A PRINCIPAL)
REGIONAL PLANNER POSITION)

Resolution No. 2022-xxx

WHEREAS, an annual review of the TCAG agency was conducted and along with additional funding provide by federal planning funds as well as ongoing state funding; and

WHEREAS, in order to meet the growing needs of TCAG and provide planning services commensurate with expectations, an adjustment in staff is needed; and

WHEREAS, it is proposed that TCAG amend position number 08021 to a Principal Regional Planner in consultation with Tulare County Administrative Office and Tulare County Human Resources and Development with the following compensation.

Principal Regional Planner*

Salary Range	Step 1	Step 2	Step 3	Step 4	Step 5
Hourly	42.3773	44.5215	46.7786	49.1501	51.6418
Annually	88,137	92,605	97,299	102,232	107,415

***Positions to receive an 8% cost of living increase effective July 3, 2022.**

NOW, THEREFORE, BE IT RESOLVED that the Tulare County Association of Governments hereby approves the position amendment as specified to provide the necessary staffing needed to handle the volume of planner funding and related work.

NOW, THEREFORE, BE IT FURTHER RESOLVED that the Executive Director is hereby authorized to make minor changes as necessary to implement the action.

The foregoing Resolution was adopted upon motion of Member _____, seconded by Member _____, at a regular meeting held on the 27th day of June 2022 by the following vote:

AYES:

NOES:

ABSTAIN:

ABSENT:

TULARE COUNTY ASSOCIATION OF GOVERNMENTS

Pete Vander Poel III
Chair, TCAG

Ted Smalley
Executive Director, TCAG



HUMAN RESOURCES
& DEVELOPMENT
TULARE COUNTY

Principal Regional Planner

Class Code:
092334

COUNTY OF TULARE

Established Date: Sep 20, 2015

Revision Date: Nov 10, 2015

SALARY RANGE

\$42.37 - \$51.64 Hourly
\$3,389.88 - \$4,131.35 Biweekly
\$7,344.75 - \$8,951.25 Monthly
\$88,137.00 - \$107,415.00 Annually

(This is not a telework position. TCAG employees work on-site with optional 1.5 telework days for no-probationary employees.)

DEFINITION:

DEFINITION

To direct and control the planning and implementation of a regional transportation plan, program or other plans. Manages, directs and assists technical and professional planning personnel in the performance of their duties. Performs highly complex professional level transportation planning and analysis. May assist with the preparation and monitoring of the division's budget.

SUPERVISION RECEIVED AND EXERCISED

Direction is provided by the Deputy Executive Director or Executive Director.

Responsibilities include the direct and indirect management of Planners, technical staff and other support personnel.

TYPICAL DUTIES:

DUTIES - may include but are not necessarily limited to:

Manage and direct the activity of a Transportation Planning Unit; support the executive management with administrative duties such as budget preparation, budget monitoring, workload and project management; may assist in interviewing, hiring, training, and evaluating staff; prepare, schedule and monitor work assignments including the review and editing of work by subordinates; manage, research and prepare information for use in special studies and complex reports; review and comment on reports, legal notices, and documents prepared by other agencies; organize, conduct and attend meetings to represent the TCAG

and make informative presentations; respond to information requests regarding Regional planning in writing, by telephone, in person, at counter, and addressing groups and meetings; direct and develop methodologies for the collection, synthesis, and analysis of data inputs and research assignments; assist in the identification and development of planning alternatives, strategies and department policies; manage and direct the preparation of complex planning documents, graphic displays and illustrations; meet with consultants and other departments in solving problems of common interest; use a personal computer and various software programs to create memos and reports, spreadsheets, monitor progress, and other documents; keep staff informed of changes in laws, policies and procedures; present reports to the TCAG Board regarding projects, plans, ordinances and other planning related matters; prepare, direct, or assist in the preparation of grant applications; organize and conduct meetings with public and private groups; perform related duties as assigned. (Essential duties may vary from position to position within this classification. Reasonable accommodation will be made when requested and determined by the County to be appropriate under applicable law.)

EMPLOYMENT STANDARDS:

Knowledge of: Theory and principles of transportation planning and research methods, trends and history of transportation planning; public information techniques; statistical analysis; principles of transportation forecasting models; Federal and State laws, including C.E.Q.A. and N.E.P.A., relating to transportation planning; Traffic Impact Study reports; intersection and roadway capacity analysis; all phases of regional transportation planning, including programs and transportation modeling; Federal transportation grant programs; methods of financing and operating transportation systems; general budgeting and fiscal administration; principles and practices of supervision and training;

Skill/Ability to: Gather and analyze factual data and summarize findings; prepare reports, and develop forms; assist in the study of transportation planning problems; maintain cooperative working relationships with local agencies, employees and the public; communicate effectively with people from a variety of educational and socioeconomic backgrounds; use a personal computer and various software programs, including word processing, spreadsheets, and graphics/presentation packages; evaluate the effectiveness of a transportation model; conduct studies related to transportation planning; summarize and combine technical and statistical information into reports and develop formats to present and display data; interpret, explain and apply pertinent laws and regulations; plan, organize, supervise and conduct major research studies; evaluate Traffic Impact Reports, including capacity analysis.

Education and Experience: Any combination of education and experience that could likely provide the required knowledge, skills and abilities is qualifying. A typical way to obtain the knowledge, skills and abilities would be:

Education:

Equivalent to bachelor's degree from an accredited college or university with major course work in transportation planning; urban or regional planning; geography; public administration or a closely related field. Major emphasis in transportation planning highly desirable.

AND

Experience:

Four years of progressively responsible experience in transportation planning, urban or regional planning, including supervision of other professional and support staff.

LICENSE OR CERTIFICATE

Possession of, or ability to obtain, an appropriate, valid California driver's license.

DESIRABLE EMPLOYMENT STANDARDS

Knowledge of: Budgeting principles to assist with or prepare and implement work programs; Geographic Information Systems.